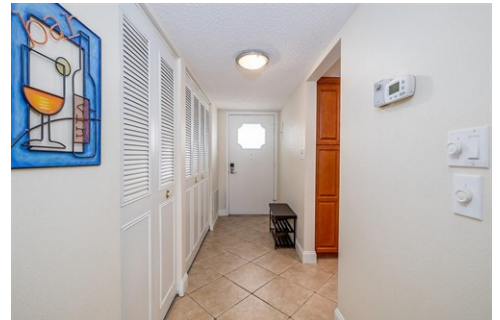




\$ 445,000



325 N Causeway # 2040, New Smyrna Beach, FL 32169

- » Beds: 2 | Baths: 2 Full
- » MLS #: NS1084526
- » Condominium | 1,134 ft² | Lot: 3.18 acres
- » More Info: [325NCauseway2040.IsForSale.com](https://www.325NCauseway2040.IsForSale.com)



Donna Concannon
NSB Luxury & Lifestyle Group
(386) 235-8588 (Donna)
(386) 453-6017 (David)
Donna@NSBHOMES.COM
<https://www.nsbhomes.com/staff/donna-concannon>



Welcome to WATERWAY EAST, a PREMIER WATERFRONT Community located on a DEEP WATER CANAL in the heart of New Smyrna Beach. Two bed, 2 bath, 2nd floor, End Unit with Marina Access! Beautifully updated Second Floor end Unit combines Modern Convenience with Coastal Charm, all just a Short Walk from Flagler Ave, Canal Street, and the White Sugar Sands Beach of New Smyrna. UNIT Highlights; 2 Spacious Bedrooms, 2 Full Bathrooms, Double balcony with Water Views accessible from Living room & Primary Bedroom. New Hurricane-Impact Windows and Automatic Hurricane Shutters for Sliding Doors Updated Kitchen with Solid Maple, Soft-Close Cabinets, Slide-outs, and Granite Countertops. Tile flooring throughout. Laundry with new top-loading Washer & Dryer (in hallway closet). Ceiling fans in all rooms & Enhanced Kitchen Lighting. Convenient location near Elevator, Stairs, and Assigned Carport Parking. Community Features: Deep Water Canal Marina, 20 boat slips (up to 28 ft boats), Available for Monthly/Daily/Weekly Rental (waiting list requirement), Fishing Dock, Fish Cleaning Station, and Kayak, Paddleboard, Canoe Racks at the waterfront. Clubhouse with Pool Table, Paddle Tennis, Full Kitchen, TV, and Library. Heated pool (winter months,) Gas fire pit & shuffleboard courts in beautifully Landscaped Courtyard. Indoor Bike Storage and Private Storage Unit included. Additional Details: AC (2014) professionally

